



**SCIENTIFIC COMMITTEE  
SECOND REGULAR SESSION**

7-18 August 2006  
Manila, Philippines

---

**NATIONAL TUNA FISHERY REPORT**

---

**WCPFC-SC2-2006**

Prepared by:

**COOK ISLANDS**

**National Fisheries Report**  
**Manila, Philippines, 7<sup>th</sup> - 18<sup>th</sup> August 2006**

**COOK ISLANDS**

**1. Annual Fisheries Information**

**1.1 Flag-state reporting**

Table 1. Number of Cook Islands longline vessels active in the WCPFC Convention Area, 2001-2005

2000	2001	2002	2003	2004	2005	2006
1	4	17	51	40	27	22 + 11?

Table 2 (a). Categories of coverage for catch, effort and size data.

Category	Catch/Effort data coverage	Size data coverage
HIGH	> 80%	> 15%
MEDIUM	50-80%	5-15%
LOW	0-50%	0-5%
-	No data	No data

**LEGEND :**

- “**Catch/Effort data coverage**” is determined by the comparing the annual catch from operational (logsheet) data to the **total** annual catch, as determined by unloadings or other types of data/information.
- “**Size data coverage**” is determined by comparing the number of trips covered by port sampling and observers (collecting size data) with the estimated number of **actual** trips undertaken by this fleet during that year.

Table 2 (b). Estimated annual coverage of catch, effort and size data for Cook Islands fishing fleets in the WCPFC Convention Area, 2003–2005.

Gear	Fleet	Year	Catch/Effort data coverage	Size data coverage
LONGLINE	COOK ISLANDS	2003-2004	HIGH	LOW
		2005	HIGH	LOW

Table 3. Annual catch and effort estimates for the Cook Islands longline fleet, by species in the WCPFC Convention Area, 2001-2005 (Source : Raised logsheet data; billfish estimates may be under-reported)

Year	Effort	Catch (metric tones)								
	(100s of hooks)	ALB	BET	YFT	BLM	BUM	MLS	SWO	OTH	TOTAL
2001	261	2	1	1	0	0	0	0	2	6
2002	17,962	890	75	57	1	16	18	17	112	1,186
2003	58,009	1,455	205	182	6	49	42	168	362	2,468
2004	78,746	1,672	337	422	11	133	42	194	368	3,178
2005	74,912	2,309	208	391	7	132	40	97	248	3,430

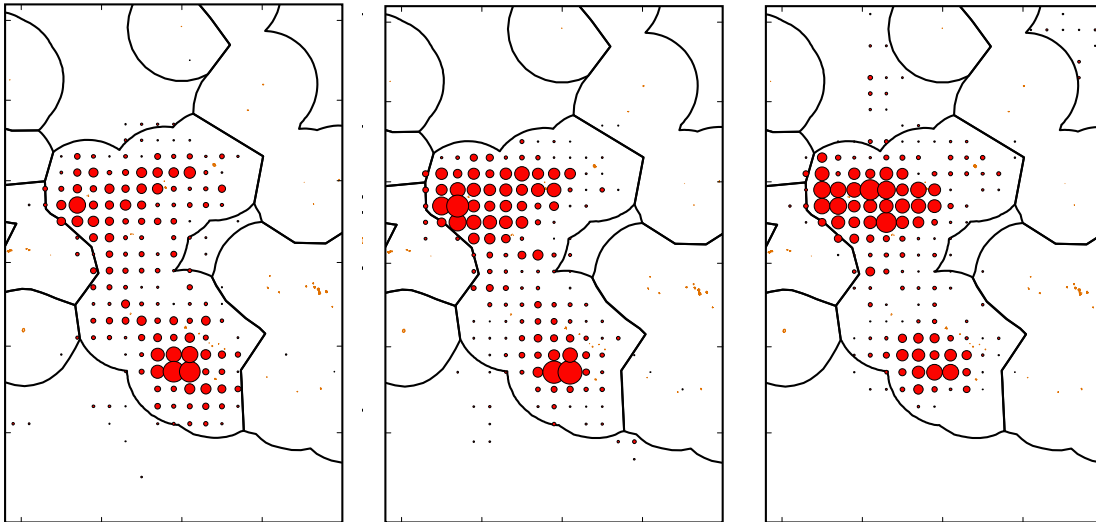


Figure 1. Annual distribution of effort (100s of hooks) for the Cook Islands longline fleet throughout the WCPFC Convention Area for 2003 (left), 2004 (middle) and 2005 (right)

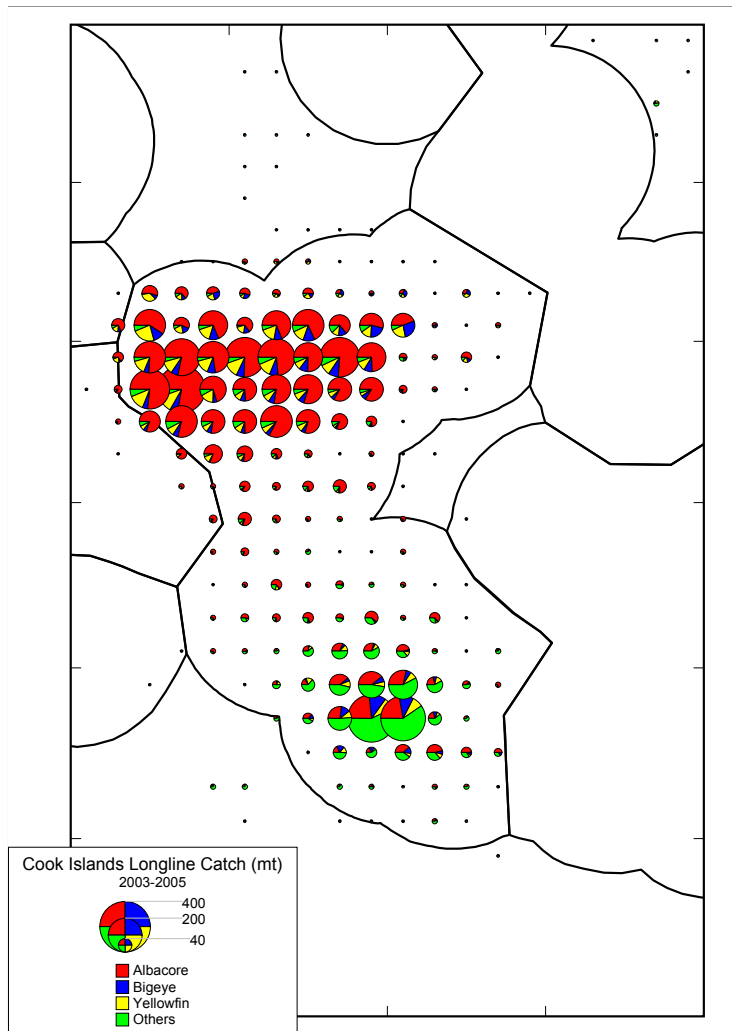


Figure 2. Distribution of catch by species for the Cook Islands longline fleet throughout the WCPFC Convention Area, 2003–2005

## 1.2 Coastal-state reporting

Tables 4. Annual catches by all longline fleets in the Cook Islands EEZ, by flag and species, 2001-2005  
(Source : Unraised logsheet data collected by The Ministry of Natural Resources, Cook Islands)

Fleet	YEAR	Catch (metric tonnes)				TOTAL
		ALB	BET	YFT	OTH	
American Samoa	2001					
	2002	19	3	1	11	33
	2003	10	0	2	2	14
	2004					
	2005					
Cook Islands	2001	2	1	1	3	6
	2002	683	58	44	113	898
	2003	1,377	194	171	524	2,266
	2004	1,446	292	367	555	2,660
	2005	2,194	196	362	436	3,187
Chinese Taipei	2001					
	2002	5	0	0	1	6
	2003	12	1	0	2	15
	2004					
	2005					
Samoa	2001					
	2002	3	0	0	0	4
	2003					
	2004					
	2005					
TOTAL EEZ	2001	2	1	1	3	6
	2002	710	61	45	125	941
	2003	1,398	196	173	528	2,294
	2004	1,446	292	367	555	2,660
	2005	2,194	196	362	436	3,187

Figure 3 (a). Trends in nominal catch rates of ALBACORE TUNA taken by longline fleets operating in the Cook Islands EEZ, 1990-2005

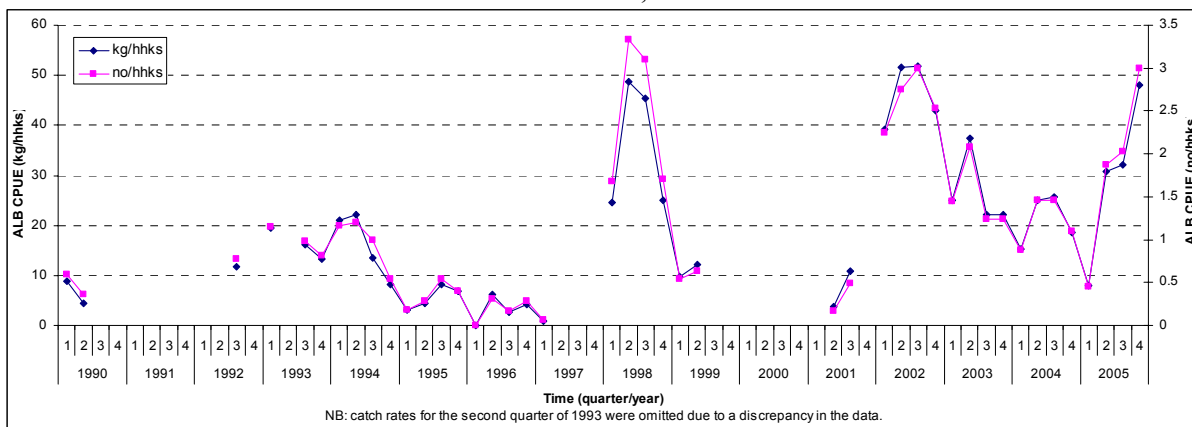


Figure 3 (b). Trends in nominal catch rates of YELLOWFIN TUNA taken by longline fleets operating in the Cook Islands EEZ, 1990-2005

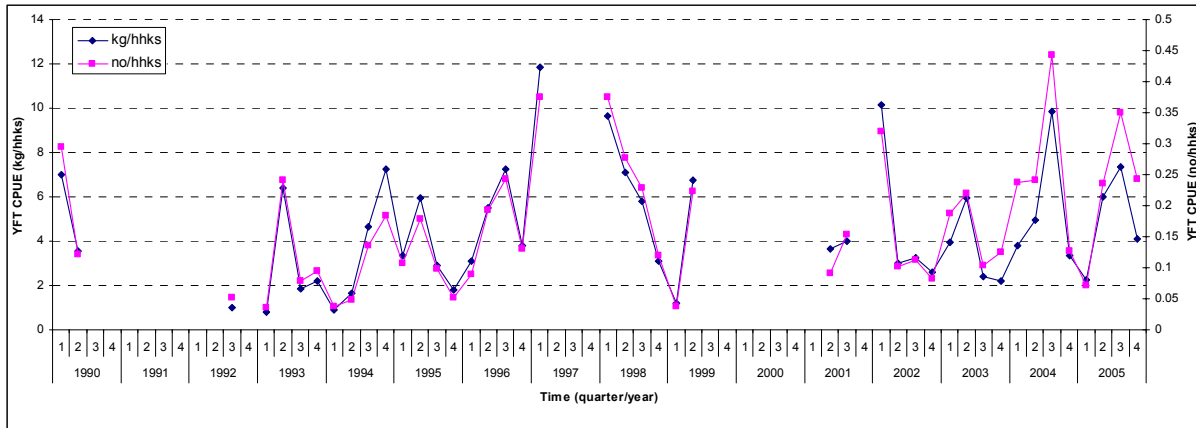
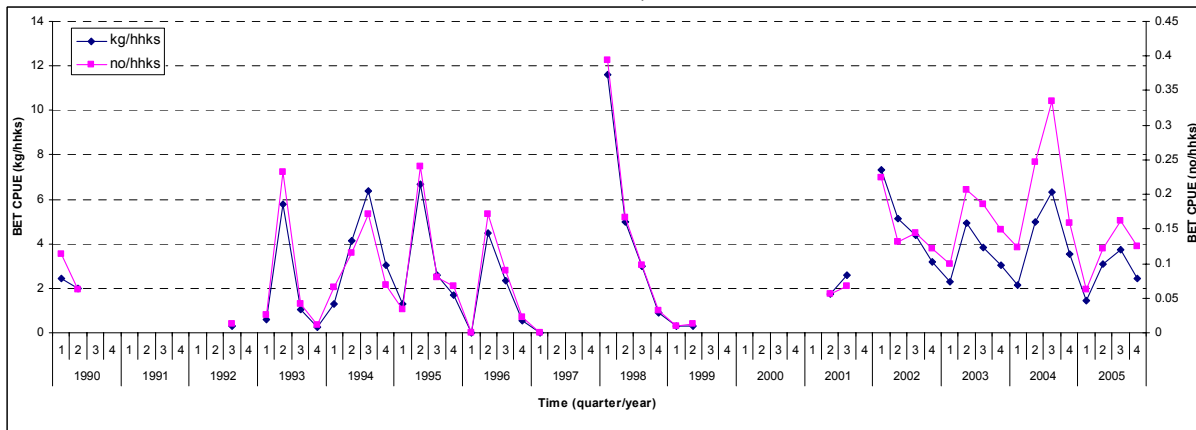


Figure 3 (c). Trends in nominal catch rates of BIGEYE TUNA taken by longline fleets operating in the Cook Islands EEZ, 1990-2005



### 1.3 Estimated total catches of non-target, associated and dependent species

No data currently available.

## 2. Research and Statistics

### 2.1 Summary of port sampling and observer programmes

Note: In terms of the estimated Annual total catches of non-target, associated and dependent species, by the Cook Islands longline fleet, 2003-2005, there has been very little observer data recorded. However from the small amount of observer data held by OFP and the Cook Islands Ministry of Marine Resources, it appears there has been no catches recorded for sea birds, turtles and marine mammals. However, shark catches are underestimated, and some finning has occurred during this period, but discard information is not always recorded. Both the observer and port sampling programmes have received support from Government this year, so it is anticipated that substantially more information will be provided to WCPFC from these sources in future.

### 2.2 Statistical data collection systems in use

Logsheets forms (SPC), Unloadings Forms, Trip Completion Report forms, Observer Data Forms (SPC), Port Sampling Data forms.